



OVERVIEW

IT Discovery, Mapping, & Analysis (Lens)

Gain a Focused Lens to the Optimal IT Footprint and Spend for Clinical Best Practice

> BENEFITS

- + Identifies cost savings for unnecessary hardware and licensing spend, applications, and more
- + Speeds accurate collection of IT assets for procurement decisions, plus security and data compliance risk
- + Provides an interactive floor-by-floor, department-by-department view of IT assets
- + Provides critical insights and analysis for clinical workflow best practice backed by healthcare IT experts

Want An Easier Way To Comprehensively Address Your IT Infrastructure? Begin Here.

CereCore's Lens is a full service offering that leverages electronic and physical IT discovery with mapping and analysis. The result is fast, accurate, and complete location-based IT information with recommendations that generate significant cost savings and clinical workflow best practices. Health IT leaders are able to accelerate decisions, eliminate unnecessary spend, close security gaps, and trim time from planning future projects including:

- + Refreshing networks, hardware, and software
- + Acquisition/divestiture/mergers
- + Clinical conversions and telehealth expansions

Electronic + Physical Asset Discovery

Our proprietary tool electronically collects data via a secure appliance within your IT information to provide a complete inventory of IT infrastructure, versioning, and licensing. Our agentless ecosystem can be delivered through a physical or virtual deployment to gather data points from multiple sources. Our services team then performs physical inventory and combines all of the data into a complete and comprehensive IT asset map.



Asset

End-user compute
Servers
Virtual stack
Network printers



Applications

Vendors
Products
Versions



Network

Firewalls
Service mapping
Ports & protocols

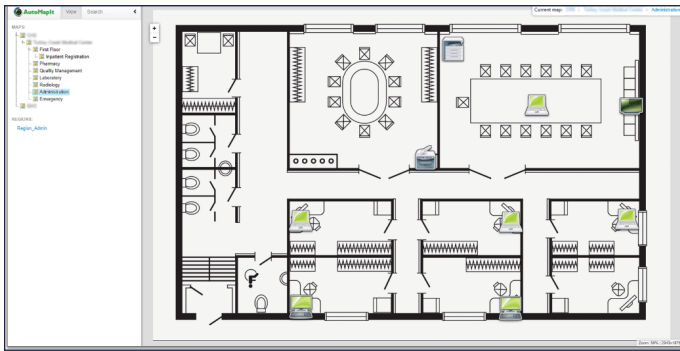


Active Directory
Objects

Users
Groups
Group policies

Interactive Location Maps

IT assets are analyzed and mapped into a department-by-department and floor-by-floor view of your IT infrastructure. Your team has continuous access to a web-based, interactive and dynamic map of assets, associated peripherals, and installed applications.



Clinical Best Practice Recommendations

Your asset inventory and maps are analyzed for clinical workflow best practice. Recommendations can be actioned quickly through broader service offerings that help IT organizations accelerate deployment and modernization initiatives. These expert services include:

- + IT Planning and Analysis
- + Network Refresh, Conversion and Management
- + IT Infrastructure Lifecycle
- + Provisioning, Conversion and Asset Logistics
- + Cloud Migration and Management

POWERFUL VISIBILITY. MEASURABLE RESULTS.

A 300-bed hospital discovered these benefits using this service for IT discovery, mapping, and analysis:

Realized annual savings of \$520K by eliminating unnecessary spend on licenses

Improved patient experience once they realized credit card readers were missing in key hospital and ambulatory registration areas

Improved office productivity by targeting the 7+ year old devices being used in ambulatory and business office areas

Improved clinician experience by identifying departments needing peripheral devices for dictation

Enhanced security protocols by identifying critical security vulnerabilities in the network infrastructure

Increased application usability by improving wireless connectivity for key facility mobile applications



cerecore.net



p: 855.276.9112 | e: info@cerecore.net

ABOUT US

CereCore® provides IT services that make it easier for you to focus on supporting hospital operations and transforming healthcare through technology. With a heritage rooted in our nation's top-performing hospitals, we serve as leaders and experts in technology, operations, data security, and clinical applications. We partner with clients to become an extension of the team through comprehensive IT and application support, technical professional and managed services, IT advisory services, and EHR consulting, because we know firsthand the power that integrated technology has on patient care and communities.